



HAWAII STATE PUBLIC
CHARTER SCHOOL
COMMISSION

EARLY LEARNING PROGRAM SUSTAINING HIGH-QUALITY PRACTICES



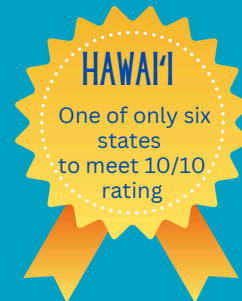
ABOUT US

Under §302D-39, the Commission has administrative authority over all state-funded early learning programs and private partnership-funded preschool programs in public charter schools.

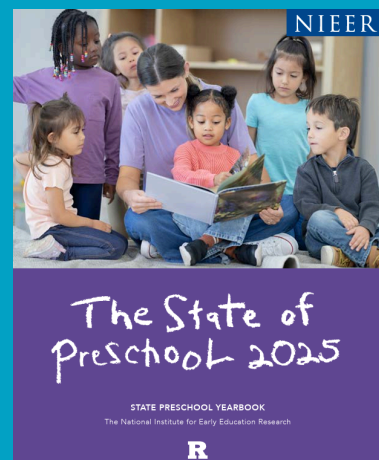
BUILDING UPON HAWAII'S EARLY LEARNING SYSTEM

The Commission's Early Learning Program was recognized for meeting all of the high-quality standard benchmarks identified by the National Institute for Early Education Research (NIEER). The ten standards serve as indicators of what's required to establish a high-quality public preschool program.

NIEER Report link:
<https://nieer.org/yearbook/2025>



2025 NIEER REPORT



CONTACT US
PREK@SPCSC.HAWAII.GOV



HAWAII STATE PUBLIC CHARTER SCHOOL COMMISSION

'Aha Kula Ho'āmana

<https://www.chartercommission.hawaii.gov/early-learning-pre-k>



To authorize, actualize, and amplify high-quality diverse educational options that prepare students for future academic or career success as contributing members of our community, and through our work, inform, enhance, and contribute to Hawai'i's public education system.

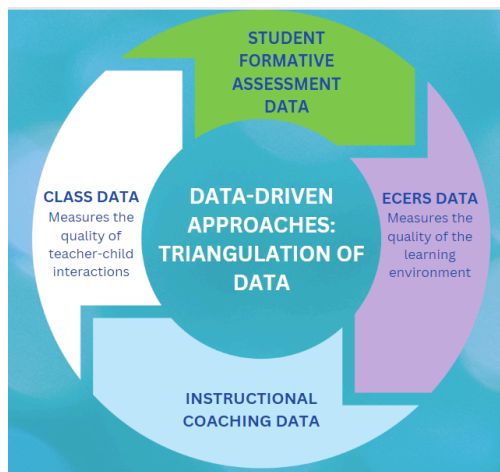
LEADING WITH A MISSION

The early learning program is aligned to the [Commission's Strategic Plan](#) to authorize high-quality charter schools.

EFFECTIVE SYSTEM OF COMMUNICATION

We believe a strong system of communication internally and externally with schools and community partners is essential to meeting the needs of our keiki and 'ohana.

GROWING INSTRUCTIONAL PRACTICE



LEADERSHIP SUPPORT

School leadership is critical to create a strong foundation for high-quality instructional practices. We provide strong support for newly opened schools followed by ongoing support and PD opportunities.

TEACHER SUPPORT

For classrooms to be cultures of thinking for their students, schools must be cultures of thinking for their teachers" (Ritchart, 2018). Our iterative professional learning process includes 10 PD per year, which is followed by small group and individualized coaching sessions.

Here is the reason why **WHY CHOOSE US**



We offer a public pre-K program that provides two pathways of learning - in 'olelo Hawai'i and English. All charter school pre-K programs apply place-based learning approaches that are reflective of Hawai'i.



PreK@spcsc.hawaii.gov



#spcsc #hipublicschools



1164 Bishop St., #1100
Honolulu, HI 96816